

CERTIFICATE OF LOCATION OF GOVERNMENT CORNER

SOUTHEAST Corner of Section 5, Township 105, Range 42, 5TH P.M.

STATE OF MINNESOTA, County of MURRAY

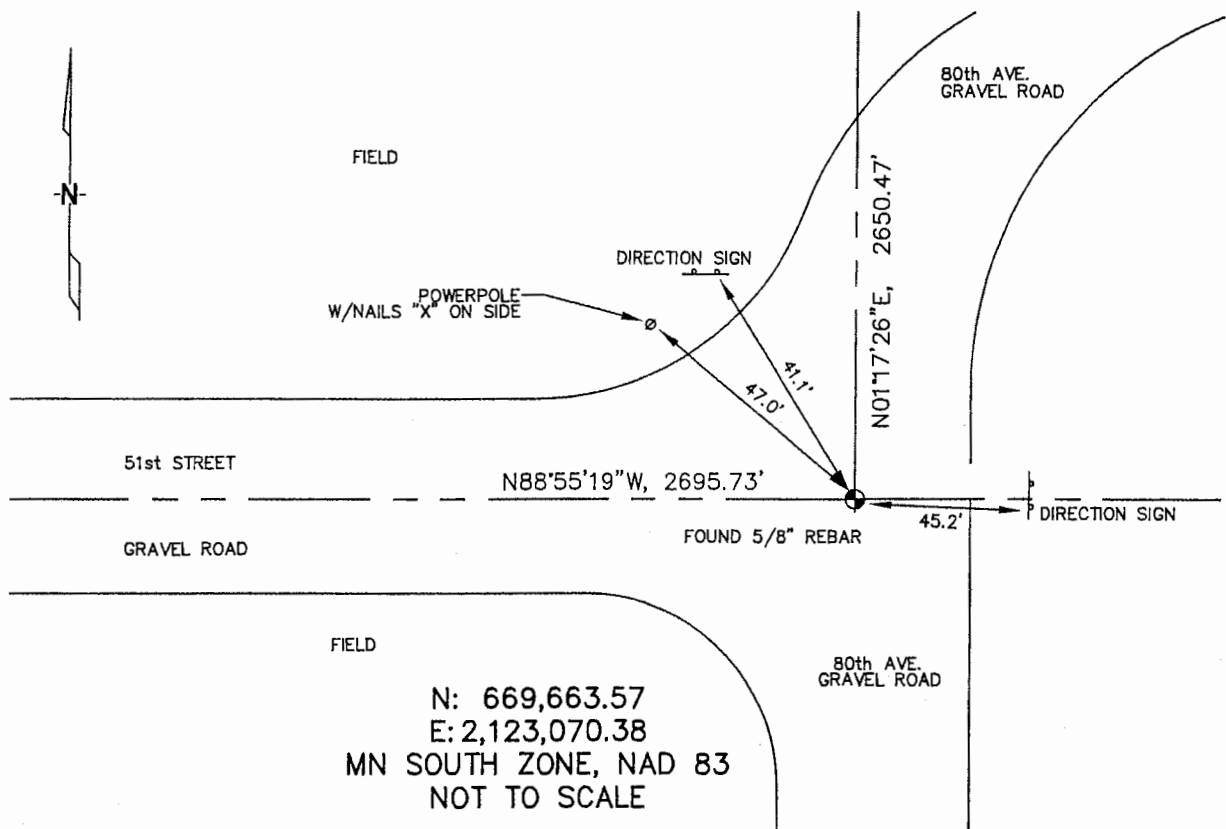
At the corner location shown on the sketch :

On 4/11/2006 found 5/8" REBAR, 0.4' BELOW GRADE.

left monument as found, lowered monument, removed monument (explain)

On _____ set _____

Sketch of reference ties



Statement of evidence relative to this corner location is on back page

I hereby certify that this document and the data contained herein was prepared by me or under my direct supervision.

Thomas D. Jeff 5/4/06
Thomas D. Jeff Date

Registration No. 44563

- Land Surveyor, Professional Engineer
- County Surveyor, County Engineer

OFFICE OF THE COUNTY RECORDER

County of _____

SEP 28 2006

I hereby certify that this document was filed in the Co. Recorders office at _____ .M. on the day of _____ A.D., 20

County Recorder James V. Johnson
By _____, Deputy

DOCUMENT NO. _____

STATEMENT OF EVIDENCE:

SOUTHEAST CORNER, SECTION 5, T. 105 N., R. 42 W.,
MURRAY COUNTY, MINNESOTA

- 1861 D.W. Wellman & S.S. Smoot, US. Deputy Surveyors, monumented corner.
- 9/23/1927 Murray Co. located a stone at corner.
Ties: SW-42.0' tack in corner fence post;
SW-45.5' tack in blazed corner post;
SE-45.1' tack in corner fence post.
- 7/18/1983 Murray Co. located a concrete monument above a field stone, 43" below surface. Placed a railroad spike.
Ties: NE-61.44' to corner fence post;
SE-60.92' to corner fence post;
NW-61.84' to corner fence post.
- 4/11/2006 Uiteig Engineers, Inc., Survey Crew, Brian Payne Party Chief, found a 5/8" rebar, 0.4' below grade at intersection of gravel roads.
Ties: NW-47.0' to nailed "X" on power pole;
NW-41.1' to bottom bolt, E post, 2-post Sign;
SE-45.2' to bottom bolt, S post, 2-post Sign;
N-2650.47' to E 1/4, Sec 5.
W-2695.73' to S 1/4, Sec 5.